

# MONTHLY MEMBERSHIP PROGRESS REPORT

LOCATION PENNSYLVANIA

District 14 U

Results as of: 4/30/2022

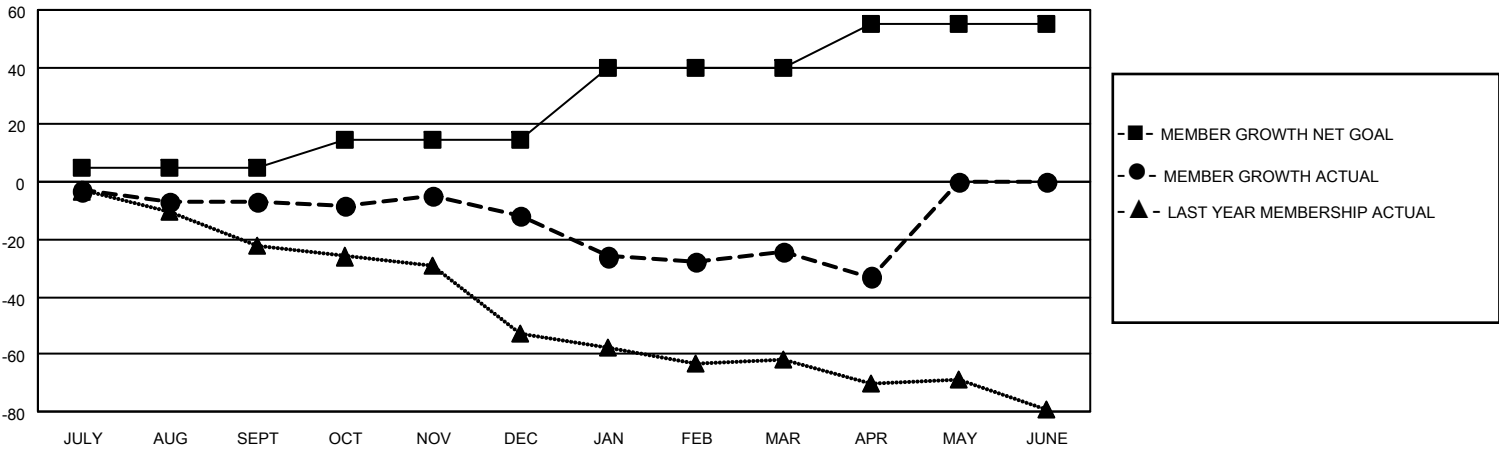
Clubs			
RESULTS FOR 2021-2022			
QUARTER	NEW CLUB GOAL	NEW CLUBS	DROPPED CLUBS
JULY/AUG/SEPT	1	0	0
OCT/NOV/DEC	0	0	0
JAN/FEB/MAR	1	0	0
APR/MAY/JUNE	0	0	1

Members			
RESULTS FOR 2021-2022			
QUARTER	MEMBER GROWTH NET GOAL	MEMBER GROWTH ACTUAL	DROPPED MEMBERS ACTUAL (including transfers)
JULY/AUG/SEPT	5	37	27
OCT/NOV/DEC	10	16	19
JAN/FEB/MAR	25	29	39
APR/MAY/JUNE	15	11	20

**GOALS AND ACTUAL NEW CLUBS CUMULATIVE**



**GOALS AND ACTUAL MEMBERS CUMULATIVE**



**DROPPED CLUBS: 1**

**19 CLUBS OF 31 ADDED 1 OR MORE NEW MEMBERS**

**GENDER DISTRIBUTION**

MALE	598 (66.74%)
FEMALE	298 (33.26%)
NON BINARY	0 (0.00%)
PREFER NOT TO ANSWER	0 (0.00%)

**DROPPED MEMBERS**

DECEASED	20
CLUB CANCELLED	28
OTHER	56
<b>TOTAL</b>	<b>104</b>

[CLICK HERE FOR CUMULATIVE MEMBERSHIP DATA](#)

TOTAL FAMILY UNIT MEMBERS	203
FAMILY MEMBERS PAYING HALF DUES	103